



# Crop-Tech Consulting, Inc.

**Crop-Tech Consulting (CTC) is an agricultural firm outside of Heyworth, IL. Crop-Tech's goal is to equip every customer with the knowledge needed to implement and sustain a successful systems approach to farming in their own operation.**

CTC helps farmers achieve the systems approach through providing services and knowledge to help better their operation. CTC works with farmers to pull soil tests, write recommendations, create variable rate spread maps, and advise on different products and practices based on our extensive plot program.

## Soil Sampling Intern

*\*Spring and Summer internships are available\**

### Specific Duties:

- Operate an ATV and a soil probe in fields to pull soil samples
- Navigate with truck and trailer to specified fields.
- Document field conditions, soil anomalies, boundary/field issues observed when testing the field.
- Assist in preparing soil samples for shipping.
- Responsible for transferring files to field equipment and back to server for records each day.
- Maintain a clean and safe work environment.
- Assist with summer educational seminars
- Help elsewhere when needed.

### Job Requirements:

- Must have clean driving record and valid driver's license
- Reliable transportation to and from work.
- Ability to safely operate an ATVs across rough terrain, the ability to push the probe in the ground and pull back out to depths ranging from 6 inches to 2 feet, and the ability to lift boxes around 75 lbs.
- Ag background or degree in field of agriculture preferred but not required.
- Excellent communication skills.
- Able to complete tasks with little or no oversight.

### Pay:

- \$15.00 per hour (SEE NOTE BELOW OF ADDITIONAL PAY)
- Time and a half for over time
- Commission paid out for acres tested correctly.
- Soil testing interns historically earn between **\$20-\$25 per hour** with overtime and commissions factored in often earning \$8,000-\$10,000 from the internship. This number will fluctuate based on testing speed/accuracy and length/timeframe of internship.

### To Apply Email Resume To:

[management@croptechconsulting.com](mailto:management@croptechconsulting.com)

Attn: Katie Ferrie

### Find out more about us at:



[Croptechinc.com](http://Croptechinc.com)



[@CropTechInc](https://twitter.com/CropTechInc)



[Crop-Tech Consulting](https://www.facebook.com/Crop-Tech-Consulting)



[Crop-Tech Consulting](https://www.youtube.com/Crop-Tech-Consulting)

*This is primarily a soil testing internship but we strive to assist our interns in learning other facets of the business, including but not limited to: plot research, data collection, ArcGIS, ag educational seminars/training sessions.*

**Seasonal hours:** Must be able to work long hours when needed. This is a predominantly outside position with a large portion of the work being done in corn and soybean fields. Applicant must be prepared to work outside in a variety of weather conditions.



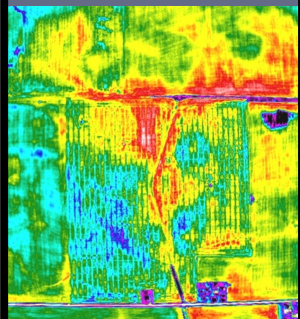
Soil Testing



Agronomy Studies



Agricultural Training



Field Research